



# Welcome to Hunter's Creek Elementary School's

## 4th Grade Open House 2023-2024





OCPS

# VISION AND MISSION

- Vision: To ensure every student has a promising and successful future.



- Mission: With the support of families and the community, we create enriching and diverse pathways that lead our students to success.



# HCES Leadership Team

- **Principal:** Dr. Martin
- **Assistant Principal:** Mrs. DePriest
- **Secretary & Bookkeeper:** Ms. Robles
- **Testing Coordinator:** Mrs. Patterson
- **Media Specialist:** Mrs. Parisi
- **ELA & MTSS Coach:** Ms. MacDonald
- **Science Coach:** Mrs. Ortiz
- **Staffing Specialist:** Mrs. Grodzienski
- **TWDL Magnet Prog. Coordinator:** Mrs. Burke
- **ESOL Compliance Specialist:** Mr. Soto
- **School Counselor:** Ms. Huertas



# General Information

- Office Hours: 7:30 am - 4:30 pm
- Instruction Hours: 8:45 am - 3:00 pm  
(Monday, Tuesday, Thursday, Friday)
  - 8:45 am - 2:00 pm (Wednesday)
- Breakfast Service: 8:00 am - 8:35 am
- All Other Students Enter Building: 8:15 am
- Tardy Bell: 8:45 am



# Attendance

- ❑ Please be sure to send in a separate absence note when your child is absent.
- ❑ Please include on the note:
  - Date of absence
  - First and last name of student
  - Reason for absence
  - Your Signature
- ❑ The attendance clerk will determine excused/unexcused status.
- ❑ Classwork is done in class and in many cases cannot be made up.
- ❑ Homework is not a substitute for instruction, but an extension of the concepts taught in class. When possible, students will be given two days or less to make up assignments for "excused absences". Two days for each day absent.



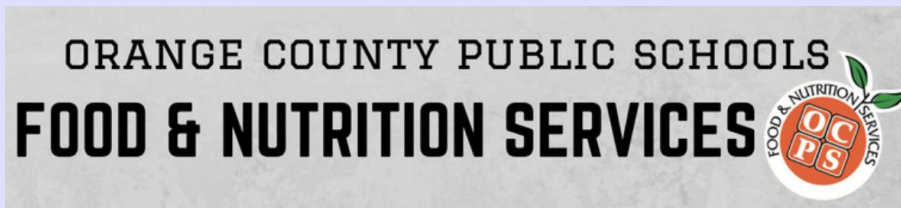
# Changes to Dismissal

- ❑ All changes to dismissal must be made via the front office. Please contact the office directly about changes. As a courtesy to the teacher, please send a message via Talking Points regarding effective changes and dates.
- ❑ If your child has a temporary change in dismissal during the day, please contact the office.



# Meals

- Free breakfast and lunch are provided to every student.



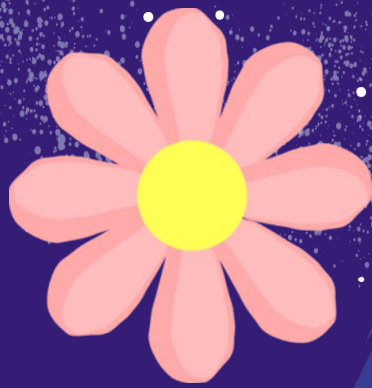
# ADDitions & Volunteers



- Volunteers are needed to help throughout the school.
- In order to be able to volunteer or to be considered as a chaperone on a field trip, you must fill out an ADDitions Form located on the OCPS Website.
- <https://www.ocps.net/cms/One.aspx?portalId=54703&pageId=89698>







# Digital Programs

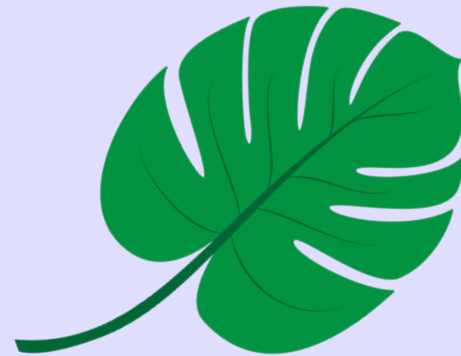
# Technology Procedures

- Devices go to and from school every day.
- Chargers go home nightly to ensure that all devices are fully charged every morning.
- Students are responsible for charging their computers every night to be prepared for school the next day.
- If there are damages, contact the school and bring the device in.
- Please complete the Parent Technology Media, and Information Consent Form via the [Parent Online Portal](#).



# Digital

- ★ Wonders
- ★ Exact Path
- ★ Canvas
- ★ Envision Math
- ★ SuccessMaker
- ★ Study Island
- ★ Performance Matters
- ★ Talking Points
- ★ Nearpod



# Talking Points

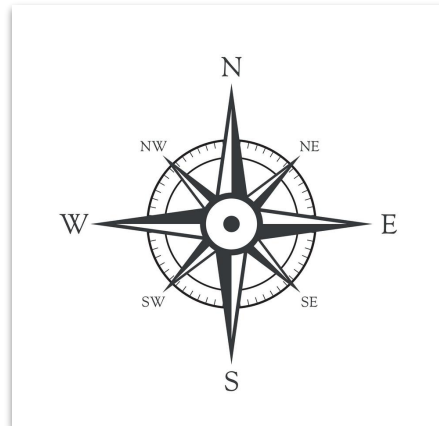
- School two-way communication messaging app that allows teachers to communicate with families in their home language.
- Parent Communication
  - Class Messages and Stories
  - Class Announcements
  - Safe & private parent/teacher messages
- Community Building
  - With your involvement, teachers can encourage students for any life or academic skill and create a positive classroom culture.
  - Parents can receive alerts about upcoming events, community resources and flyers, etc.



# Assessment & Monitoring

## We have to inspect what we expect!

- Teachers participate in Weekly PLC Meetings and Monthly Data Meetings
- Data is Tracked-
  - Exact Path Reading and Math Diagnostics
  - Exact Path Success Rates
  - Assessments
    - Math
    - Reading
    - Science



# Exact Path Reading



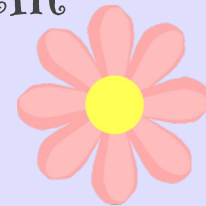
**Exact Path** is an online program for reading and that will help your students' teacher determine your student's needs, personalize learning, and monitor progress throughout the school year.

- **Exact Path Diagnostic:**

Beginning, Middle, and End of Year Assessment

- **Requirements:**

Reading: 20 minutes a day at least  
2 times a week.





Edmentum - Study  
Island

# Study Island

- Practice and classroom assessments to improve science performance.
- Built-in games, experience points, coins, badges, and other incentives ensure that children are engaged in learning.
- Measures and tracks each child's overall progress within the program and identifies strengths and weaknesses by topic.
- For more information, access: [Student Overview Video](#) or [Overview Guide](#)





# Nearpod



- ★ Nearpod is an interactive classroom tool used to engage students in customized lessons.
- ★ Lessons can be teacher led live or student paced.
- ★ They provide every student the opportunity to participate and show what they know through interactive tools such as:
  - Open-Ended Questions
  - Matching Pairs
  - Quiz
  - Draw It
  - Poll
  - Fill in the Blanks
  - Memory Test
- ★ For more information visit: [How to Join a Nearpod Lesson](#) or [Nearpod.com](#)







Performance  
Matters

Performance Matters  
for S...

# Performance Matters



- 
- Common Assessments:
  - Students around the district take part in common assessments for reading and math.
  - Measures each child's performance and understanding of the content they have been working on in class.
  - Provides teachers with data to drive instruction based on student needs.
- Performance Matters:
  - The testing platform that provides students access to the common assessments as they are assigned.
  - Accessed through LaunchPad during designated assessment times.
  - Important: These assessments are done independently.





Canvas OCPS

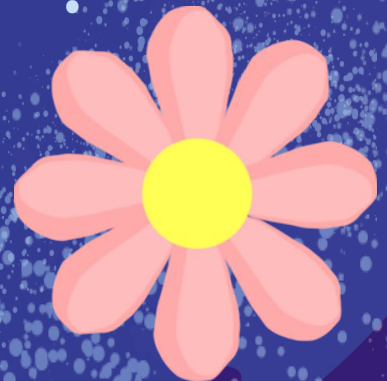
# Canvas

- A digital learning environment for students and teachers.
- Canvas assignments or modules may be created for each class depending on teacher preference to utilize the platform or not.
  - Daily lessons, assignments, resources, etc. may be posted in Canvas as well.
  - Students access each course to engage with shared resources and instruction (LaunchEd Only)
  - View student coursework, assignments, and monitor progress

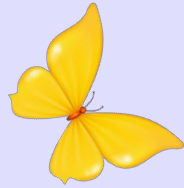




# Daily Overview



# 4th Grade Team



- Mrs. Denaro
- Ms. Beazley
- Mrs. Brady
- Mrs. Cabán - Dual Language
- Ms. Hahn - Dual Language
  - Mrs. Holmes
  - Ms. Parker
- Ms. Plowright



# Fourth Grade Schedule

8:45-9:30	Supplemental Support (FBS)
9:30-10:15	Specials
10:15-11:45	Reading Whole Group & Centers
11:45-12:30	Lunch/Recess
12:30-1:00	Writing
1:00-2:00	Math
2:00-2:30	Health/Alt. P.E./S.S.
2:30-3:00	Science

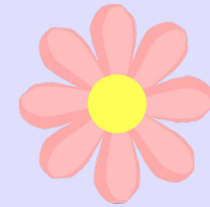
**Note: Departmentalized Class Schedules  
will vary**



# 4th Grade Schedule

8:45-9:30	Supplemental Support (FBS)
9:30-10:15	Specials
10:15-11:45	Reading Whole Group & Centers
11:45-12:30	Lunch/Recess
12:30-1:00	Writing
1:00-2:00	Math
2:00-2:30	Health/Alt. P.E./S.S.
2:30-3:00	Science

**Note: Departmentalized Classroom Schedules will vary.**





# Daily Schedule- Ms. Parker's- Monday.Tuesday, Thursday and Friday

## Ms. Parker's Class Schedule

2023-2024

Time	Subject
Group A Schedule	
8:45 - 9:00	Attendance/ Morning Work
9:00 -9: 25	Reading Intervention/ Enrichment
9:30 - 10:15	Specials (PE1, Music, PE3, Art, PE2)
10:15 - 10:45	Whole Group Reading/ ELA
10:45 - 11:45	Small Group Centers
11:45- 12:15	Writing
12:15 - 12:30	Recess
12:35 - 1:00	Lunch Table 8 AB
Time	Subject
Group B Schedule	
1:00 - 1:30	Whole Group Reading/ ELA
1:30 - 2:30	Small Group Centers
2:30 - 2:50	Writing
2:30 - 3:00	Health & SEL

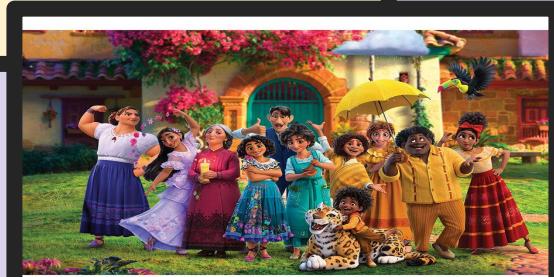




# Daily Schedule- Ms. Parker;s- Wednesday

## Wednesday Schedule

Time	Subject
<b>Group A Schedule</b>	
8:45 - 9:30	Health & SEL
9:30 - 10:15	Specials (PE1, Music, PE3, Art, PE2)
10:15 - 10:45	Whole Group Reading/ ELA
10:45 - 11:45	Small Group Centers / Writing
11:45 - 12:00	Recess
12:00 - 12:30	Lunch
<b>Group B Schedule</b>	
12:30 - 1:00	Whole Group Reading/ ELA
1:00- 1:30	Small Group
2:30 - 2:40	Prepare for Dismissal





# Daily Schedule- Ms. Plowright- Monday, Tuesday, Thursday and Friday



Times	Subject
8:45-9:30	Reading Intervention
9:30-10:15	Specials
10:15-11:15	Math
11:15-12:15	Science/ Social Studies
12:15-12:35	Recess
12:35-1:00	Lunch
1:00-2:00	Math
2:00-3:00	Science/Social Studies

# Daily Schedule- Ms. Plowright- Wednesday



Times	Subject
8:45-9:30	Health
9:30-10:15	Specials
10:15-11:00	Math
11:00-11:45	Science
11:45-12:05	Recess
12:05-12:30	Lunch
12:30-1:15	Math
1:15-2:00	Science

# Curriculum Florida B.E.S.T. Standards

## Writing

- narrative
- argumentative
- expository

## Social Studies

- History
- Economics
- Geography
- Civics

## Science

### Physical Science

- Properties Matter
- Changes of Matter
- Forms of Energy
- Energy Transfer and Transformation
- Motion

### Earth and Space

- Earth Structures
- Earth and Space

### Life science

- Heredity and Reproduction
- Interdependence
- Florida Animals and Plants

## Health

- The purpose of this course is to provide students with the opportunity to gain knowledge and skills necessary to make healthy choices with the overall goal of improving quality of life, as well as describe the relationships between a healthy behavior, environment and personal health..

# P.E. Information

## Physical Education

### What Can Students Bring to P.E.

**YES**



Water Water Water !!!

Athletic Shoes

Hats

Sunglasses

Sunscreen

**NO**



Jackets

Sweaters

Hoodies

Boots

Sandals

Heels





# Report Cards & Grades



# Report Cards

Report cards are issued every nine weeks and are a record of a student's progress based on expected achievement.

Progress reports are issued at the midpoint of each nine weeks and are **not** a part of the permanent record. Their purpose is to inform parents how their child is progressing prior to the issuance of the report card.

- Teachers will hold conferences during Conference Week. If additional conferences are required, please contact your child's teacher.



# Grades

- Grades are entered into Skyward weekly
- Students receive a minimum of 2 grades per subject area each week
- Grades are connected to grade level standards
- Skyward Family Access Instructions/ Support can be found at [skyward.ocps.net](https://skyward.ocps.net). our school and our Facebook page.



# Grades

## Grading Scale:

90%-100%: A

80%-89%: B

70%-79%: C

60%-69%: D

59% >: F

\*50% min. grade for all student

\*60% min. grade for English Language Learners & ESE Students

**Official grades are posted in Skyward**





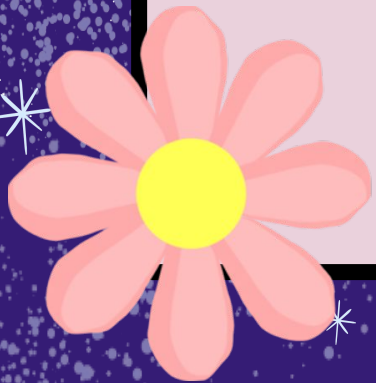
# Grades Continued

Grades are based on the accumulation of points

GRADED



Classwork	20%
Labs/Projects	20%
Quizzes	25%
Tests	35%



# Classroom Expectations

## What to expect in 4th Grade

- Class Meetings
- Positive Behaviors and Adherence to the Student Code of Conduct
- Classwork
- Grades
- Communication
- Homework



## Reading

We use the Wonders reading program that provides students with both independent and collaborative learning opportunities.

During the reading block students are provided both whole group and small group instruction to ensure that all students are successful.

The logo for the Wonders reading program, featuring the word "Wonders" in a stylized, yellow, rounded font with a red outline, set against a white background with a red border.

## Math

We are using Envision Math with a Saavas integration component. The program provides access to all levels of learners with interactive videos and digital math tools!

It is very important that students practice their multiplication and division facts daily.

We are also pleased to be using Successmaker. This is a personalized learning program system for continuous adaptive intervention and differentiation. This program supplements the daily core mathematics instruction.



My Backpack  
Apps

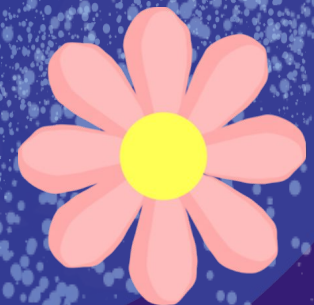
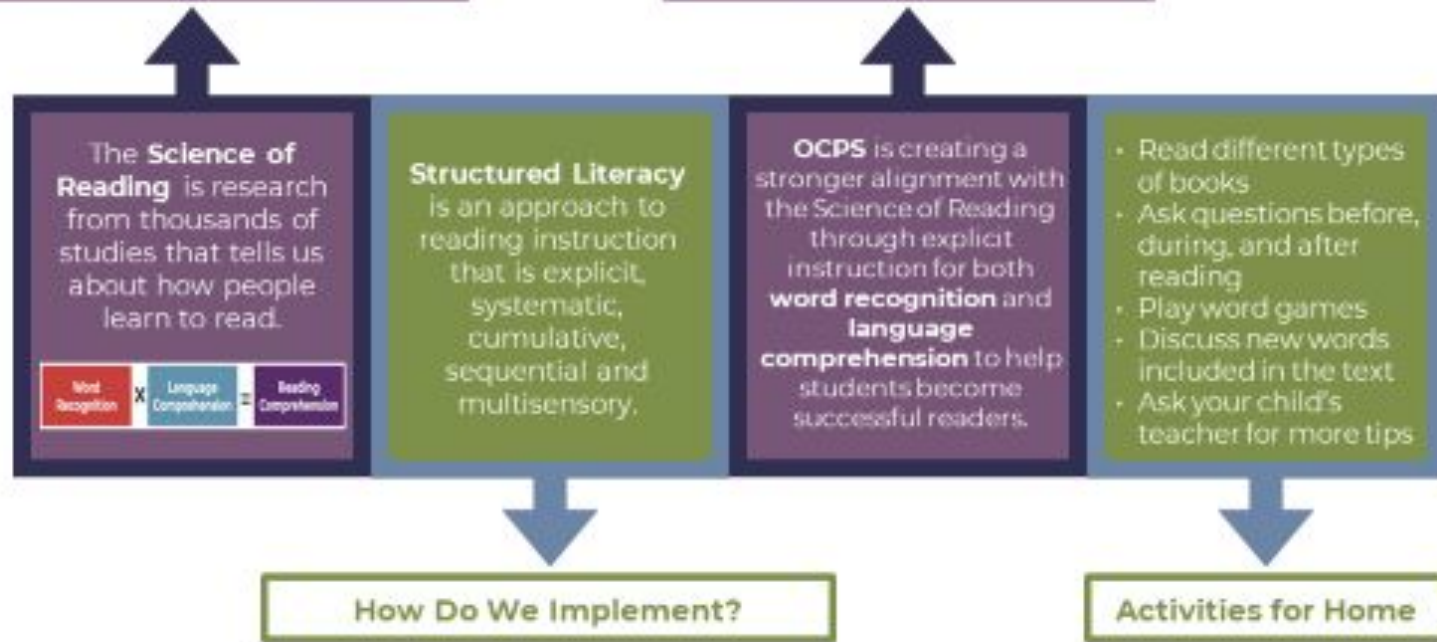
Student Textbooks are found on the Student Dashboard

The logo for enVisionMATH, featuring the text "enVisionMATH" in a white, sans-serif font with a colorful, multi-colored dot above the "i" in "Vision". To the right of the text is a small, stylized illustration of a green frog.

# The Science of Reading

What is the Science of Reading?

Instructional Shifts in OCPS



# Florida B.E.S.T. Standards & Fast Assessment

Administered 3 times a year in Math & ELA



[FSassessment.org](https://FSassessment.org)

# Homework

- Students are given homework packets at the beginning of the week and given until the end of the week to complete and turn in.
- Homework includes, but is not limited to:
  - Sight word practice
  - Spelling words (practice)
  - Writing
  - Comprehension skill
  - Phonics skill
  - Math
- Nightly reading is also recommended



# Class Information



# How Can I Contact My Child's Teacher?



- Please use Talking Points to send a message or email the teacher directly.
- If there is an emergency, please contact the office directly.
- Contact information is available on school website.
- Email is quickest, phone calls only before or after school day.





# Things to Know



## Hunter's Creek Elementary



In severe weather dismissal, we will revert to a **single car line**.

Please bring your car rider number tag to the cafeteria to get your child.

If your child is a walker/biker, you will check him/her out in the front office (front walker) or back of school (back walker).

### Afternoon Car Pool Process:



- All cars enter off of Town Center Blvd and follow the normal route.
- When you get to the last turn, K-2 students stay to the right and 3-5 stay left.
- Twenty vehicles will stage in the yellow box.
- All twenty vehicles will load and when all are filled, staff will release traffic.
- Vehicles staged to the right (K-2) will exit to the bus loop and turn right onto Town Center Blvd.
- Vehicles staged to the left (3-5) will exit the normal route and turn right onto Town Center Blvd.
- This process will continue until dismissal is over.



# HCES PTA Information

**HCES PTA** is a volunteer team of parents, guardians, teachers, students and community partners that are committed to making every child's potential a reality by engaging and empowering families and communities to advocate for all children.

**HCES PTA** helps support the school in various ways throughout the year.

**Visit our website to get involved!**

<https://hcespanthers.memberhub.com/> . This is where families can purchase memberships and school apparel.)



# Transportation

- Car tags must be displayed when picking up your child in the car line.
- Additional car tags can be acquired via the front office.
- Please make sure to clearly communicate transportation plans with the front office first and then your child's teacher.
  - Ex: Alternating days or in the event your child's method of transportation changes.



# Cell Phone Policy



Effect July 1, 2023, [section 1006.07\(2\)\(f\), Florida Statutes](#), now provides that "a student may not use a wireless communications device during instructional time.

The 2023-2024 Code of Student Conduct requires that wireless communications device(s)\* be silenced and put away (in a backpack or purse) during the school day while on campus, including lunchtime and transitioning between classes.

*\*Wireless communication devices include but are not limited to, cell phones and/or auxiliary/ancillary devices such as watches and ear buds.*

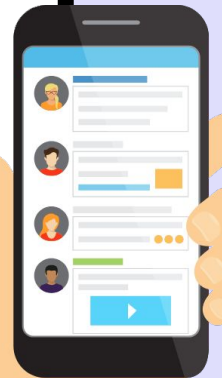
# Cell Phone Policy Continued



**The following actions will be taken if a student violates OCPS' cell phone policy:**

- Confiscation (Item returned at the end of the day)
- Detention
- Positive Alternative to School Suspension (PASS)
- Out-of-School Suspension (OSS)

At no time shall OCPS be responsible for theft, loss or damage of cell phones or other electronic devices brought onto district property





# Questions or Concerns?

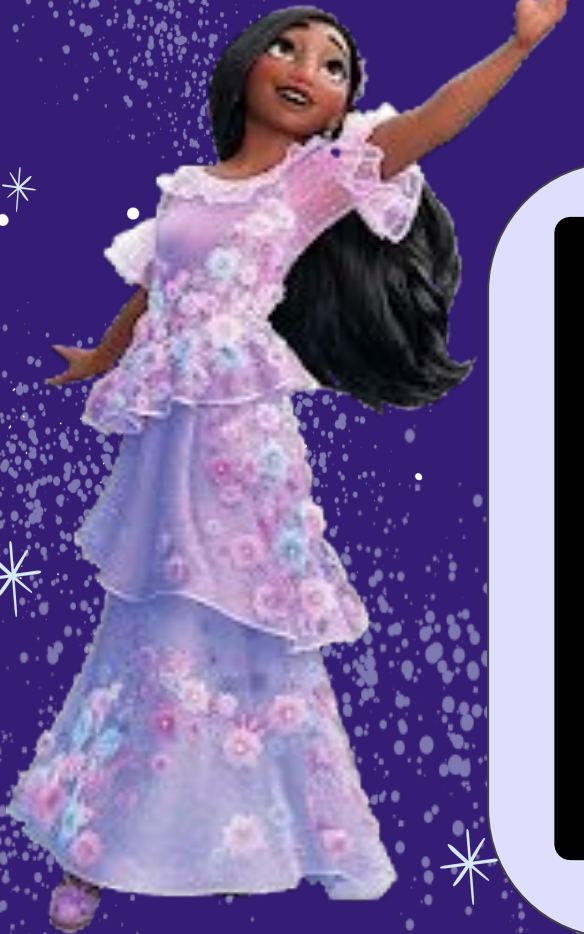
★ Please contact your child's teacher(s).

Talking Points is the district's preferred method of communication.

We recommend checking out our monthly newsletter for up-to-date information of what your child is learning and doing in class.



# How can I get involved with my school?



ADDitions Volunteer

PTA

School Advisory Council (SAC)

Multilingual Parent Leadership Council





# Dress Code



- Clothes shall be worn as they are designed. For example, pants secured at the waist, belts buckled, no underwear as outerwear, no underwear exposed.
- Clothing must cover the body from one armpit across to the other armpit and down to approximately mid-thigh (see image to the left). Tops must have straps. Undergarments must not be viewable. Rips, holes, or tears in clothing must be below mid-thigh.
- Shoes shall be worn at all times and should be safe for the school environment. Cleated shoes and shoes with wheels are not acceptable.

## Dress Code Continued



- Headgear shall not be worn on campus during the school day, unless approved by the principal.
- Specialized courses may require specialized attire, such as sports uniforms, or safety gear and must be approved by the principal before being worn during the school day.
- See-through, revealing, or mesh garments must not be worn without appropriate coverage underneath that meet the minimum requirements of this dress code.

Gang paraphernalia, garments and/or jewelry, tattoos, or other insignias, which display or suggest sexual, vulgar, drug, alcohol, or tobacco-related wording/graphics or may tend to provoke violence or disruption in school shall not be worn.

# Dress Code Continued



- Clothing must not state, imply, or depict hate speech or imagery targeting groups based on race, ethnicity, gender, sexual orientation, gender identity, religious affiliation, or any other protected class.
- Clothing and accessories that endanger students or staff shall not be worn.
- Individual schools may implement school uniforms with community input and approval of the principal's supervisor.
- Individual schools are expected to use the state and district dress and grooming guidelines as minimum standards; any adjustments may be made upon approval of the principal's supervisor. The principal at each school reserves the right to determine what appropriate dress is for the school as detailed in these minimum standards.

# Parent Tips!



- ❑ Check your child's folders (Homework folder and Friday folder) for important papers and homework assignments.
- ❑ There is homework everyday, except Friday!
- ❑ Your child can log onto websites, such as from home for extra reading and math practice.
- ❑ Students can also access textbooks online in their digital backpack (OCPS Launchpad)

# Thank You

Thank you for attending our Open House! We look forward to a year of successful collaboration and student learning!

